



Ann_Helies Mon_Eseré_L D_DE_ER_R

cat.no.INRI078

release date: July 5. 2005

format: CD

1. WE'LL DANCE • 2. YOU WERE ON MY SIDE (MELODICA) • 3. SARAH • 4. MIDNIGHT •
5. THESE STREETS • 6. HERE • 7. THIS QUIET ROOM • 8. COLD NIGHT • 9. EARLY RISING •
10. YOU WERE ON MY SIDE (CELLO) • 11. VOICES • 12. WEB

ANNELIES MONSERÉ is a Belgian songwriter, currently living in Hilversum, the Netherlands. Her basic instruments are piano and voice. In some of her songs she also uses cello, guitar, melodica and glockenspiel. The simplicity of the melodies is not unlike EMPRESS, while the sound textures will remind the listener of MOVIE TONE or TARA JANE O'NEIL.

'Helder' is Annelies' debut CD, though she also performs in the duo ZENT ONE (who have a split LP out w/ the brilliant CIRCLE BROS. on MORC). She has also done collaboration work with DREKKA and TOSS ((k-*raa*-k)3).

With ZENT ONE and solo, she has performed mesmerizing concerts with the likes of MOVIE TONE, CRESCENT, HOOD, DREKKA, RIVULETS, and TARA JANE O'NEIL.

She studied painting and is now studying history.

WHY BLUESANCT IS SO EXCITED ABOUT ANNELIES' 'HELDER' CD:

"Annelies' music is singular. It is not trying to be anything except honest and simple. She performs songs for voice and generally one instrument; piano, cello, guitar, or melodica. Sometimes there is only voice.

She is the first European artist on Bluesanct.

Like the other artists on Bluesanct and within the Day2 Alliance, she is a card-carrying member of romance, whose songs are expressions of love and hope and all the pain and fright that comes with trusting another person.

I had to sneak my first listens to her music behind her back. Her collaborator and my friend, Wim Lecluyse (who runs Morc) played it for myself, Nathan Amundson (of RIVULETS) and JESSICA BAILIFF (KRANKY) one afternoon because it was too powerful not to. We were stunned.

Drekka set out to try to perform these songs in my own voice, but only came a fraction of the way to being as vital.

I knew that this music needed to be part of the Bluesanct oeuvre, and so it is.
And I couldn't be happier."

- Michael Anderson, April 2005.



RIYL: EMPRESS, MOVIE TONE, TARA JANE O'NEIL, K.JOY, FUSCILLAGE, VOLLMAR

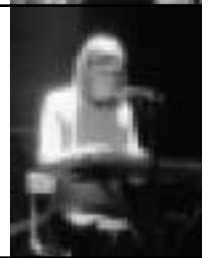


Exclusively distributed by SC DISTRIBUTION.

Phone: (812) 335-1572 / Fax: (812) 323-8494

Distributors contact Jason Nickey at <jason@scdistribution.com>

Retail stores contact Nick Blandford at <nick@scdistribution.com>



BlueSanct PoBox 2192, Bloomington, IN 47402-2192 . bluesanct.com

N